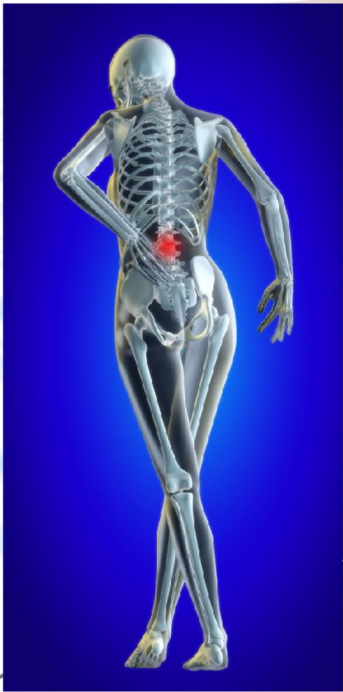


ORBEAM
Laser Technology

Percutaneous
Laser
Disc
Decompression





A world of choices

.....15W.....30W.....
.....super frequency.....



| | |
|--------------------------|------------------------------------|
| Laser Type | GaAlAs diode laser |
| Model | 980-15C |
| Wavelength | 980nm |
| Max. Power (1 W steps) | 15W |
| Operation Mode | CW, single and repeat pulse |
| Pulse Duration | 25µs - 10 s |
| Repetition Rate | 0.05Hz - 20kHz |
| Fiber (SMA905 connector) | 200/400/600µm |
| Pilot Beam | Red diode laser, 635nm, power <5mW |
| Control Mode | True color touch screen |
| Voltage/Current Rating | 110/220 VAC, 5A, 50/60Hz |
| Dimensions | 215(W) x 245(L) x 315(H) mm |
| Weight | 4 Kg |

| | |
|--------------------------|------------------------------------|
| Laser Type | GaAlAs diode laser |
| Model | 980-30K |
| Wavelength | 980nm |
| Max. Power (1 W steps) | 30W |
| Operation Mode | CW, single and repeat pulse |
| Pulse Duration | 10µs - 3s |
| Repetition Rate | 0.2Hz - 20kHz |
| Fiber (SMA905 connector) | 400/600µm |
| Pilot Beam | Red diode laser, 635nm, power <5mW |
| Control Mode | True color touch screen |
| Voltage/Current Rating | 110/220 VAC, 5A, 50/60 Hz |
| Dimensions | 400(W) x 385(L) x 200(H) mm |
| Weight | <13Kg |

ORBEAM lasers are ideal for Percutaneous Laser Disc Decompression

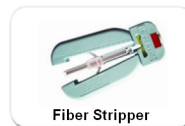
STANDARD ACCESSORIES :



supplied with each laser



OPTIONAL ACCESSORIES :



CONSUMABLES :



400 micron



EMTRON

Emtron A.Ş.
Nuri Paşa Caddesi 158/1
Yeniköy - Sarıyer 34464
İstanbul - Turkey
Tel.: +90 (212) 257 1787
Fax : +90 (212) 257 8183
<http://www.orbeam.com>

DENTAL

- Internal decontamination
- General surgery (cutting)
- Therapy
- Tooth whitening
- Surfaces of teeth
- Internal gingivectomy

ENT

- Dacryocystorhinostomy (DCR)
- Turbinectomy
- Nasal polypectomy
- Tonsillectomy
- Glossectomy
- Endo sinus surgery
- Stapedectomy

OTHER APPLICATIONS

- Endovenous laser treatment (EVLV)
- Laser Lipolysis
- Hemorrhoidectomy
- Neurosurgery
- Urology
- Suitable for most soft tissue applications